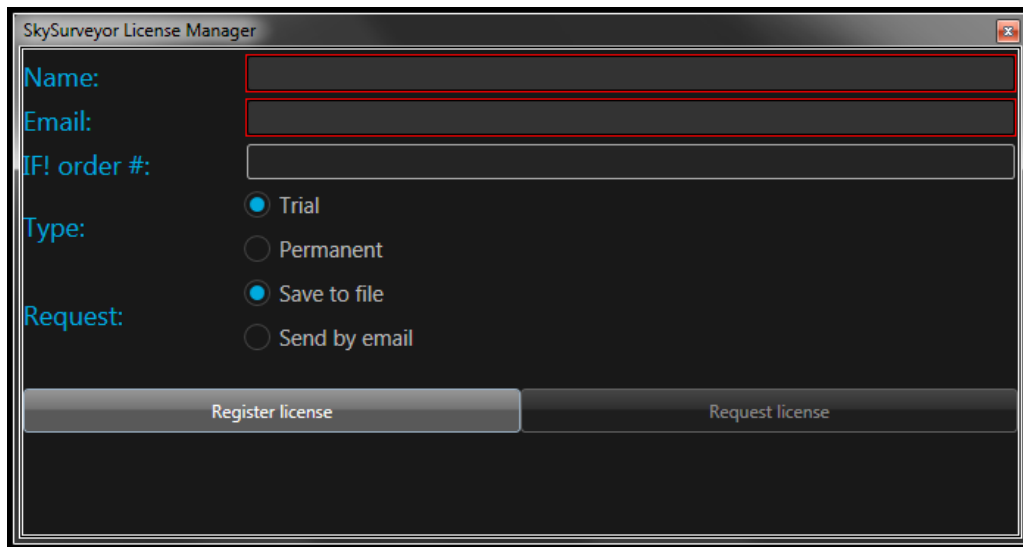


You can download the relevant SKG/SKW installation package (ZIP format) at any time, including for future updates, from our [download page](#).

SKG/SKW asks for a valid license key during installation. This key is license and machine dependent. During the software installation the SKG/SKW license manager (LM) window appears. The LM is used to either request a license key, or to register a license key provided by Innovations Foresight.



SKG/SKW license manager (LM) window

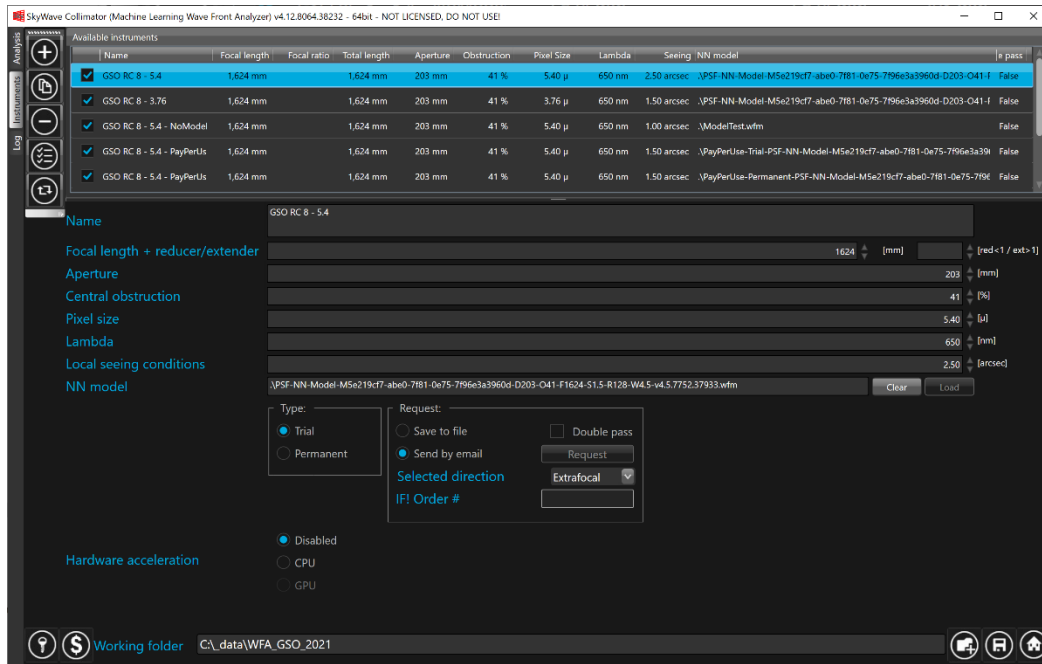
When requesting a permanent license key (using the request button) you have to provide the Innovations Foresight confirmation order number in the field “IF! Order #” that you received when purchasing the software from our online store. This does not apply for a trial license request. In either case you need to fill the name and email fields as well as for the request button to become available. For software versions with free permanent licenses (those are not for sale and therefore do not appear on our online store), such as SKW-Collimator, just use for the order number in the field “IF! Order #” the value 00000. When clicking on the request button you will have the choice to send your request either by email, if your machine has an email client and Internet connection, or to save it on a file to be attached to an email using another machine.

After you received your license key from Innovations Foresight run SKG/SKW again, then when the LM window appears click on the register button (you do not have to fill the name and email

fields again) for providing the key. For further information please refer to [SKG/SKW interactive help and documentation](#).

The SKW mathematical models are sent to the user as encrypted files using the software license key discussed above. As a consequence, they are also machine dependent.

A SKW model request is available in the SKG/SKW instrument panel for any instrument setup by the user, see below.



SKG/SKW instrument panel and settings

Model management works in a similar way than the LM disused above. Be sure you have filled all the necessary telescope settings and specified the intra or extra focal direction for your model, see the selected direction list.

You can request either a trail (it will be automatically a PPU model) or permanent mathematical model (it could be PPU or UNL depending which one you bought from our store), in the latter case you have to provide a Innovations Foresight order confirmation number. Then send your request either by email, if your machine has an email client and Internet connection, or save it on a file to be attached to an email using another machine.

When you have received your SKW encrypted mathematical model from us you can load it using the load button at the end of the NN model field in this instrument panel.

If you already have a model loaded you need to clear it before you can request a new one otherwise the model request button will not be available, see the clear button at the end of the NN model field.

For further information please refer to our [SKG/SKW interactive help and documentation](#).

